



## CNS-WHT-551PSPP

### SPECIFICATION DATA SHEET

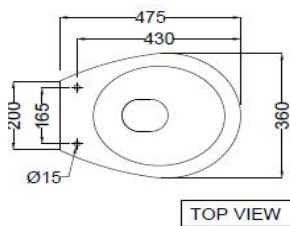
#### PRODUCT DETAILS

Manufacturer :	Jaquar	Type:	EWC P-Trap
Colour:	White	Outlet	Horizontal
Technical Details:	Internal diameter of inlet hole dia. $\varnothing 50 \pm 3$ mm	Material:	Ceramic - Vitreous China
	External diameter of outlet hole dia. $\varnothing 100 \pm 5$ mm		
Vertical distance between the Floor and the center line of the inlet hole $\leq 350$ mm			

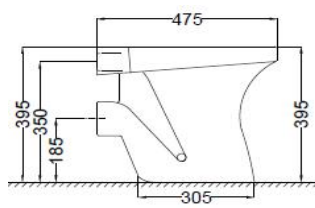
#### PRODUCT IMAGE



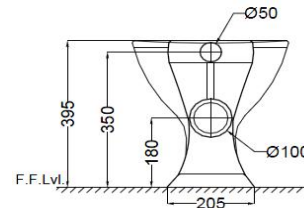
#### TECHNICAL DRAWING



TOP VIEW



SIDE VIEW



BACK VIEW

Product Dimension	360x475x395 mm	FEATURES
Product Weight	12.0 Kg	Packed with Outlet Gasket, Floor Fixing Screws, Dual Flush-3/6 LPF.
ACCESSORIES INCLUDED		
PP Soft Close Seat cover		CNS-WHT-109S
Floor fixing screw		ZPS-SNS-FB01
ACCESSORIES EXCLUDED		
Wall Hung Cistern		WHE-WHT-184NL
CERTIFICATION		
Compliance : EN 997:2012 + A1:2015 (E), SANS 497:2011		
All technical dimensions are in accordance to British standards, Bureau of Indian Standards		
DISCLAIMER: Our every effort has been made to ensure factual accuracy, the information presented subject to changes due to requirements in different sites, markets and/or countries. All dimensions are in mm (Tolerance $\pm 5$ MM). Jaquar reserves the right to make the necessary amendments at any time without prior notice.		

